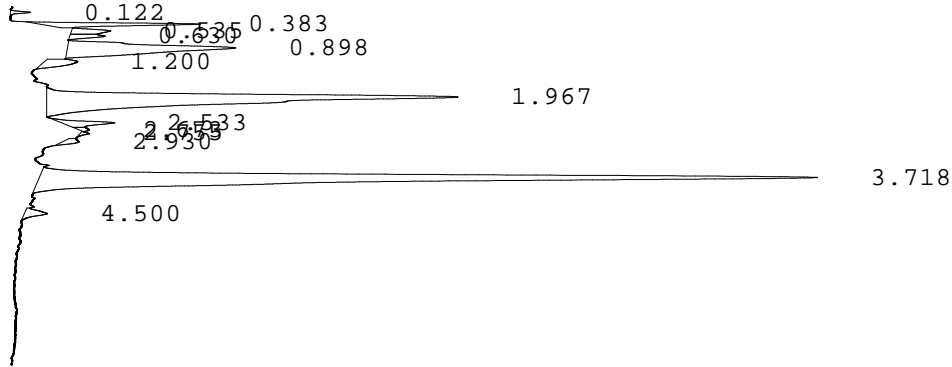


LABORATORIO PREGEN
 Carrera 15a No 106-42
 BOGOTA

Batch 1958, Rack A, Plate 1, Well E02, 170754
 [9D245A2BBB6104CA] Oct 24, 2025 13:36:40 Pressure = 69 bar (66 to 70)

AF



PEAK	RT	REL RT	% CONC	AREA	COMMENT
1	0.122	F 0.06	0.3%	3053	
2	0.383	F 0.19	3.7%	35022	
3	0.535	F 0.27	1.3%	12196	
4	0.630	F 0.32	1.0%	9277	
5	0.898	F 0.45	11.2%	105572	
6	1.200	F 0.60	1.8%	16650	
7	1.967	F 0.99	29.8%	281884	Consistent with F
8	2.533	F 1.28	1.8%	16674	
9	2.673	F 1.35	0.3%	2678	
10	2.755	F 1.39	0.2%	1730	
11	2.930	A 0.79	0.6%	5391	
12	3.718	A 1.00	47.1%	445245	A peak - REVIEW

Total Area: 944950

- Codes:
- 1) Wide A peak
 - 2) Area of A peak < 80%
 - 3) Peak area greater than expected
 - 4) Peak after A2
 - 5) Alc > 10%
 - 6) HbF or variant present
 - 7) Total sample area too small/big
 - 8) A2 is not within normal range