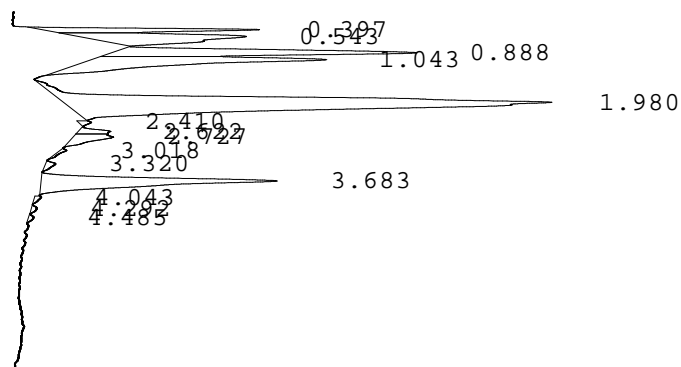


LABORATORIO PREGEN
 Carrera 15a No 106-42
 BOGOTA

Batch 2019, Rack A, Plate 1, Well C05, 171482
 [CC77D4A02FA02EE2] Dec 15, 2025 13:11:26 Pressure = 73 bar (71 to 74)

FA



PEAK	RT	REL RT	% CONC	AREA	COMMENT
1	0.397	F 0.20	5.2%	54157	
2	0.543	F 0.28	9.2%	97087	
3	0.888	F 0.46	12.0%	125944	
4	1.043	F 0.54	13.3%	140132	
5	1.980	F 1.02	42.3%	444395	Consistent with F
6	2.410	F 1.24	0.3%	3111	
7	2.622	F 1.35	1.0%	10418	
8	2.727	F 1.41	2.1%	22303	
9	3.018	A 0.81	0.3%	2648	
10	3.320	A 0.89	0.4%	4309	
11	3.683	A 0.99	13.3%	140207	A peak
12	4.043	A 1.08	0.2%	2472	
13	4.292	A 1.15	0.2%	2098	
14	4.485	A 1.20	0.2%	1856	
				Total Area: 1051137	

- Codes:
- 1) Wide A peak
 - 2) Area of A peak < 80%
 - 3) Peak area greater than expected
 - 4) Peak after A2
 - 5) Alc > 10%
 - 6) HbF or variant present
 - 7) Total sample area too small/big
 - 8) A2 is not within normal range