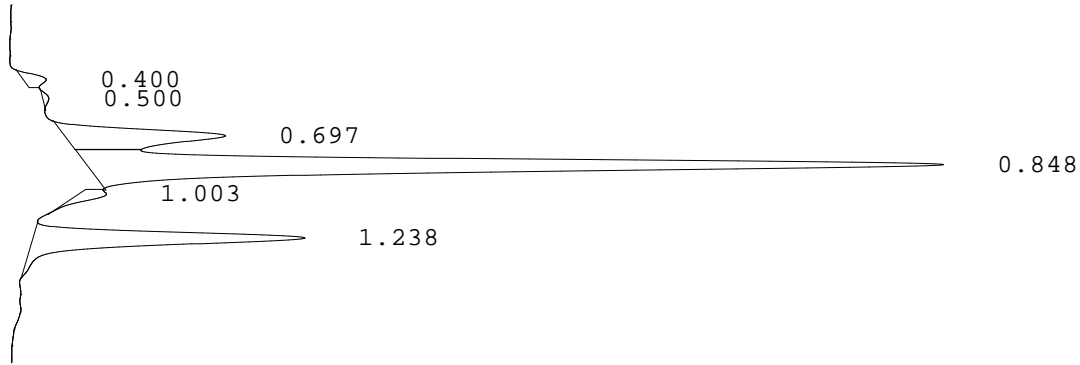


LABORATORIO PREGEN  
Carrera 15a No 106-42  
BOGOTA

Batch 2003, Rack A, Plate 1, Well A04, 171276  
[8D63AFB178108662] Dec 03, 2025 10:13:42 Pressure = 74 bar (74 to 77)

FA



PEAK	RT	REL RT	% CONC	AREA	COMMENT
1	0.400	F 0.47	1.4%	7551	
2	0.500	F 0.59	0.4%	2243	
3	0.697	F 0.82	13.7%	74007	Acetylated F peak
4	0.848	F 1.00	62.4%	336760	Consistent with F
5	1.003	F 1.18	1.9%	10519	
6	1.238	A 1.02	20.1%	108481	A peak - REVIEW
Total Area:				539561	

- Codes:
- 1) Wide A peak
  - 2) Area of A peak < 80%
  - 3) Peak area greater than expected
  - 4) Peak after A2
  - 5) Alc > 10%
  - 6) HbF or variant present
  - 7) Total sample area too small/big
  - 8) A2 is not within normal range