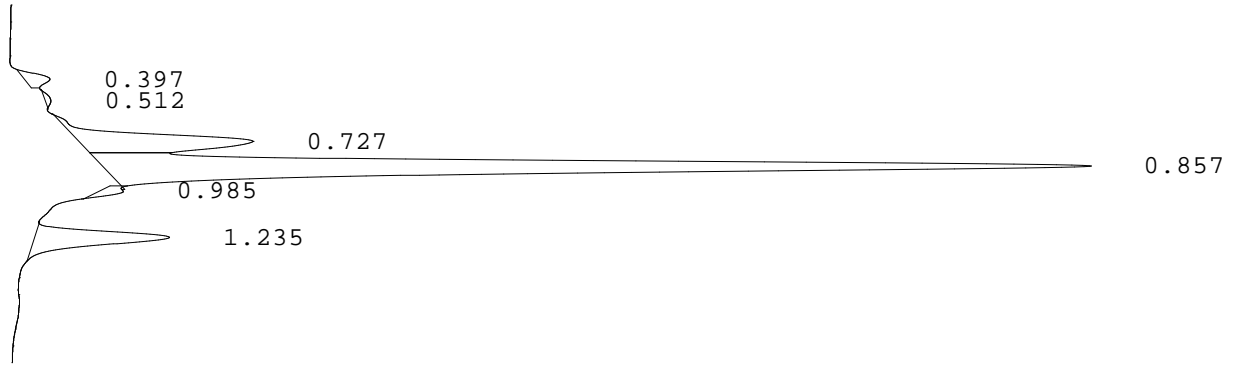


LABORATORIO PREGEN
Carrera 15a No 106-42
BOGOTA

Batch 1953, Rack A, Plate 1, Well A01, 859806
[89355FCAC214DB3D] Oct 21, 2025 10:15:17 Pressure = 67 bar (66 to 68)

FA



PEAK	RT	REL RT	% CONC	AREA	COMMENT
1	0.397	F 0.46	1.6%	8452	
2	0.512	F 0.60	0.4%	2228	
3	0.727	F 0.85	15.8%	82477	Acetylated F peak
4	0.857	F 1.00	70.2%	367578	Consistent with F
5	0.985	F 1.15	1.4%	7214	
6	1.235	A 1.01	10.6%	55564	A peak
Total Area:				523513	

- Codes:
- 1) Wide A peak
 - 2) Area of A peak < 80%
 - 3) Peak area greater than expected
 - 4) Peak after A2
 - 5) Alc > 10%
 - 6) HbF or variant present
 - 7) Total sample area too small/big
 - 8) A2 is not within normal range