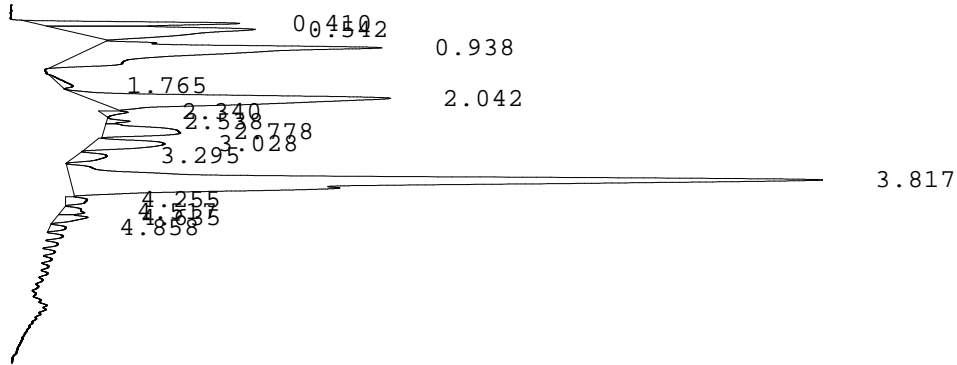


LABORATORIO PREGEN
 Carrera 15a No 106-42
 BOGOTA

Batch 2078, Rack A, Plate 1, Well E11, 172358
 [8C63728D4A0606EA] Feb 18, 2026 13:17:16 Pressure = 57 bar (54 to 58)

AF



PEAK	RT	REL RT	% CONC	AREA	COMMENT
1	0.410	F 0.20	4.3%	55391	
2	0.542	F 0.27	8.7%	111121	
3	0.938	F 0.47	16.6%	213171	
4	1.765	F 0.88	0.5%	6499	
5	2.042	F 1.02	15.1%	193921	Consistent with F
6	2.340	F 1.16	0.5%	6543	
7	2.538	F 1.26	0.4%	5077	
8	2.778	F 1.38	3.9%	50639	
9	3.028	A 0.79	3.4%	43430	
10	3.295	A 0.86	1.3%	17009	
11	3.817	A 1.00	42.1%	540119	A peak - REVIEW
12	4.255	A 1.11	0.8%	10087	3
13	4.517	A 1.18	0.8%	10433	
14	4.635	S 0.86	1.0%	12951	3
15	4.858	S 0.91	0.5%	6276	
Total Area:				1282667	

- Codes:
- 1) Wide A peak
 - 2) Area of A peak < 80%
 - 3) Peak area greater than expected
 - 4) Peak after A2
 - 5) Alc > 10%
 - 6) HbF or variant present
 - 7) Total sample area too small/big
 - 8) A2 is not within normal range