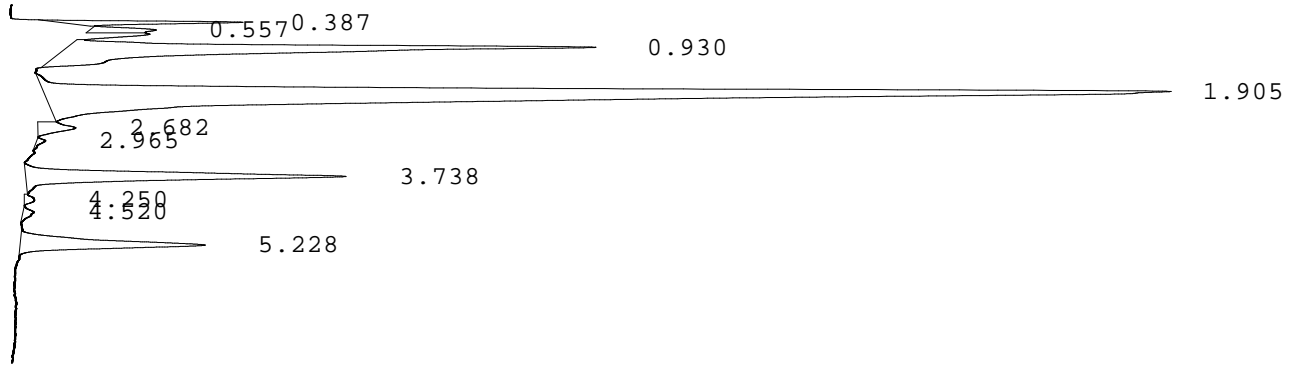


LABORATORIO PREGEN  
 Carrera 15a No 106-42  
 BOGOTA

Batch 1978, Rack A, Plate 1, Well F12, 859897  
 [8D66B6CA608D719F] Nov 14, 2025 13:48:24 Pressure = 70 bar (67 to 71)

FAS



PEAK	RT	REL RT	% CONC	AREA	COMMENT
1	0.387	F 0.20	2.4%	40292	
2	0.557	F 0.28	1.4%	23080	
3	0.930	F 0.47	18.8%	321109	
4	1.905	F 0.97	57.9%	989515	Consistent with F
5	2.682	F 1.37	1.4%	23430	
6	2.965	A 0.79	0.2%	3371	
7	3.738	A 0.99	10.7%	182071	A peak
8	4.250	A 1.13	0.3%	5017	
9	4.520	A 1.20	0.3%	5968	
10	5.228	S 0.98	6.7%	114474	Consistent with S
				Total Area: 1708327	<b>A/V=1.60</b>

- Codes:
- 1) Wide A peak
  - 2) Area of A peak < 80%
  - 3) Peak area greater than expected
  - 4) Peak after A2
  - 5) Alc > 10%
  - 6) HbF or variant present
  - 7) Total sample area too small/big
  - 8) A2 is not within normal range