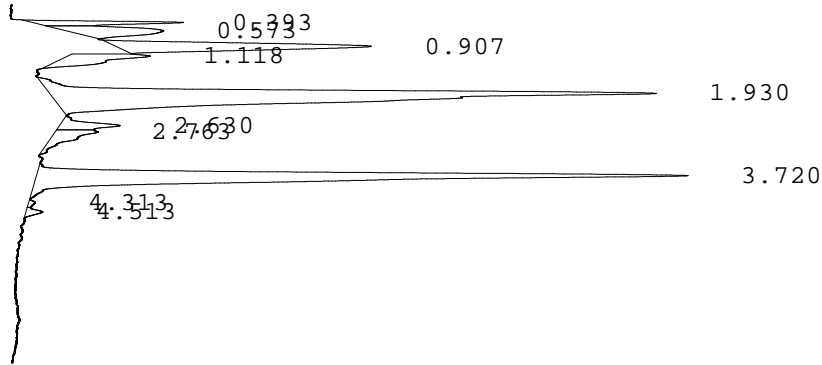


LABORATORIO PREGEN
 Carrera 15a No 106-42
 BOGOTA

Batch 2004, Rack A, Plate 1, Well B09, 171308
 [D966BBB570B88E48] Dec 03, 2025 13:12:17 Pressure = 74 bar (70 to 74)

FA



PEAK	RT	REL RT	% CONC	AREA	COMMENT
1	0.393	F 0.20	3.0%	37596	
2	0.573	F 0.29	4.8%	60306	
3	0.907	F 0.46	10.6%	132553	
4	1.118	F 0.57	4.0%	50112	Acetylated F peak
5	1.930	F 0.99	39.9%	499180	Consistent with F
6	2.630	F 1.35	2.3%	28836	
7	2.763	F 1.41	2.6%	32468	
8	3.720	A 0.99	32.1%	401692	A peak - REVIEW
9	4.313	A 1.15	0.2%	2303	
10	4.513	A 1.20	0.5%	6443	
				Total Area: 1251489	

- Codes:
- 1) Wide A peak
 - 2) Area of A peak < 80%
 - 3) Peak area greater than expected
 - 4) Peak after A2
 - 5) Alc > 10%
 - 6) HbF or variant present
 - 7) Total sample area too small/big
 - 8) A2 is not within normal range